

# XTOOL | Retail Marker

## Quick Start Guide

Kurzanleitung | Guía de inicio rápido | Guide de démarrage rapide |  
Guida rapida | Korte handleiding | Manual de referência rápida |  
Skrócona instrukcja obsługi | クイックガイド | 빠른 시작 가이드 | 快速入門指南 |  
快速使用指南

# XTOOL



# 01

[support.xtool.com/article/2075](https://support.xtool.com/article/2075)



## Multi-language versions and more information

To find user guides in multiple languages and more help, please visit [support.xtool.com/article/2075](https://support.xtool.com/article/2075) or scan the QR code.

## Mehrsprachige Versionen und weitere Informationen

Falls Sie Benutzerhandbücher in mehreren Sprachen suchen und weitere Hilfe benötigen, besuchen Sie bitte [support.xtool.com/article/2075](https://support.xtool.com/article/2075) oder scannen Sie den QR-Code.

## Versiones multilingües y más información

Para encontrar guías de usuario en varios idiomas y más ayuda, visite [support.xtool.com/article/2075](https://support.xtool.com/article/2075) o escanee el código QR.

## Versions multilingues et informations complémentaires

Pour trouver des guides de l'utilisateur dans plusieurs langues et accéder à une assistance supplémentaire, veuillez consulter [support.xtool.com/article/2075](https://support.xtool.com/article/2075) ou scanner le code QR.

## Versioni multilingue e ulteriori informazioni

Per manuali dell'utente in altre lingue o ulteriore assistenza, visitate [support.xtool.com/article/2075](https://support.xtool.com/article/2075) o scansionare il codice QR.

## Meertalige versies en meer informatie

Ga voor gebruikershandleidingen in meerdere talen en meer hulp naar [support.xtool.com/article/2075](https://support.xtool.com/article/2075) of scan de QR-code.

## Versões multi-idíomas e mais informações

Para encontrar manuais do utilizador em idiomas múltiplos e mais ajuda, visite, se faz o favor, [support.xtool.com/article/2075](https://support.xtool.com/article/2075) ou leia o código QR.

## Wersje wielojęzyczne i więcej informacji

Aby znaleźć instrukcje obsługi w wielu językach i dodatkową pomoc, odwiedź stronę [support.xtool.com/article/2075](https://support.xtool.com/article/2075) lub zeskanuj kod QR.

## 複数言語バージョンと詳細情報

複数言語のユーザーガイドと詳細なヘルプについては、[support.xtool.com/article/2075](https://support.xtool.com/article/2075) にアクセスするか、QRコードをスキャンしてください。

## 다중 언어 버전 및 추가 정보

다중 언어로 된 사용 설명서와 추가 도움말을 찾으려면 [support.xtool.com/article/2075](https://support.xtool.com/article/2075) 페이지를 방문하거나 QR 코드를 스캔하십시오.

## 多語言版本及更多資訊

如需取得其他語言版本的使用者指南或幫助資訊，請前往 [support.xtool.com/article/2075](https://support.xtool.com/article/2075) 或掃描 QR code。

## 多语言版本及更多信息

如需获取其他语言版本的用户指南或更多帮助信息，请访问 [support.xtool.com/article/2075](https://support.xtool.com/article/2075) 或扫描二维码。你也可以访问 [yuque.com/makeblock-help-center-zh/retail-marker](https://yuque.com/makeblock-help-center-zh/retail-marker) 查看在线帮助。

# 02

<b>What is in the box</b> .....	<b>01</b>
<b>Meet xTool Retail Marker</b> .....	<b>02</b>
<b>Get the machine ready</b> .....	<b>05</b>
<b>Use xTool Retail Marker</b> .....	<b>07</b>
<b>Maintenance</b> .....	<b>08</b>

\* The English version is the original instructions verified by the manufacturer.

## What is in the box



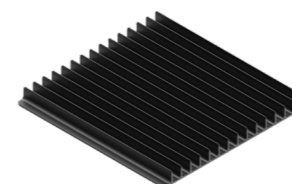
xTool Retail Marker



Power cable



Pipe



Slatted panel



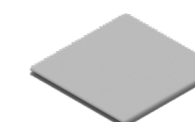
L-shaped positioning piece



USB cable



Screwdriver



Lint-free cloth



Key (pre-installed)



Test materials



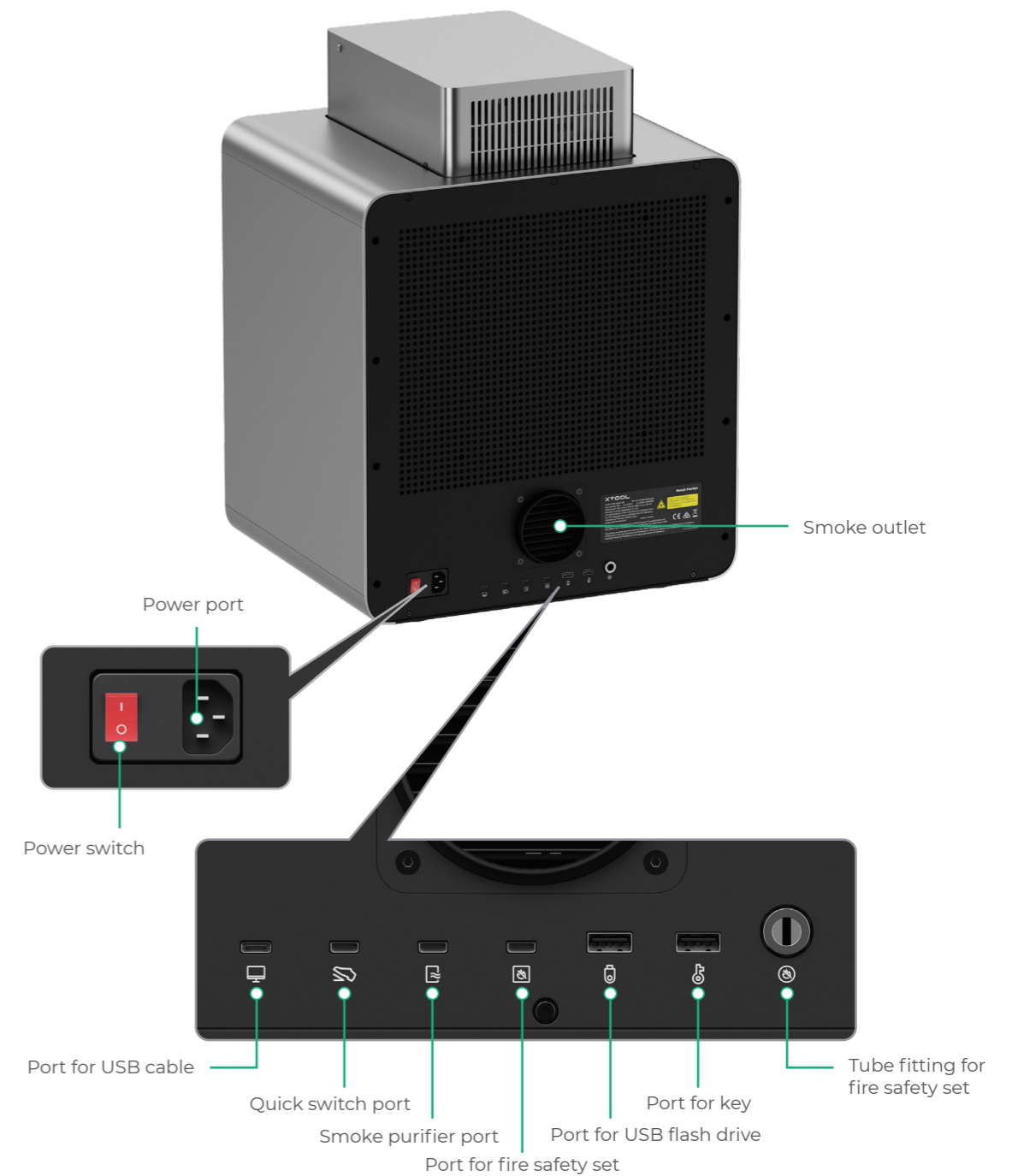
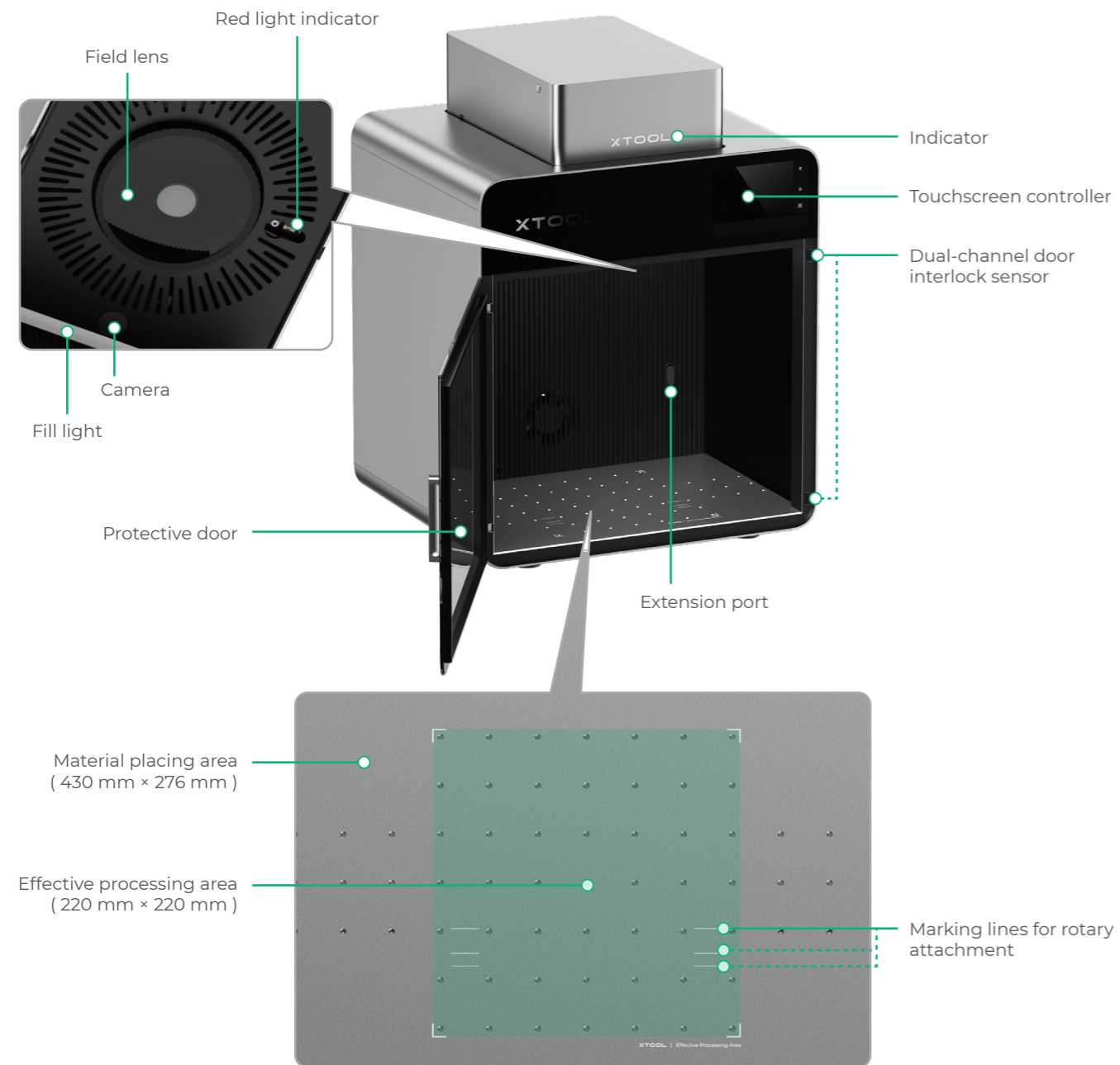
Quick Start Guide



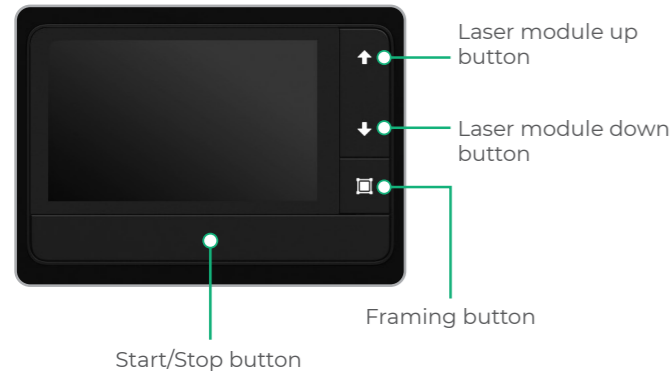
Safety Instructions

# Meet xTool Retail Marker

## Product structure



## Touchscreen controller



- **Laser module up button:** Lifts the laser module during manual focusing.
- **Laser module down button:** Lowers the laser module during manual focusing.
- **Framing button:** Press it once to start or stop framing.
- **Start/Stop button:** Press it once to start or stop material processing; press it twice consecutively to repeat the last processing task.

## Machine states and indicator display



Machine state	Indicator display
Powered on	Solid on
Processing	Blinking slowly
Setting network / Upgrading firmware	Blinking rapidly
Sleeping / Powered off	Going off

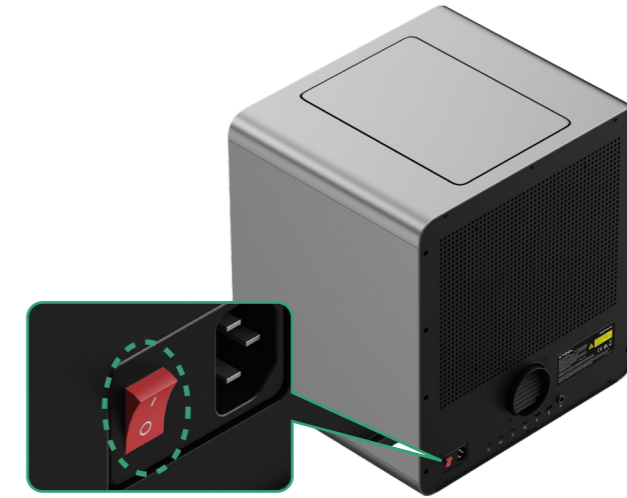
## Specifications

Product name	xTool Retail Marker
Size (W × D × H)	461 mm × 418 mm × 503 mm
Effective processing area	220 mm × 220 mm
Maximum processing speed	10,000 mm/s

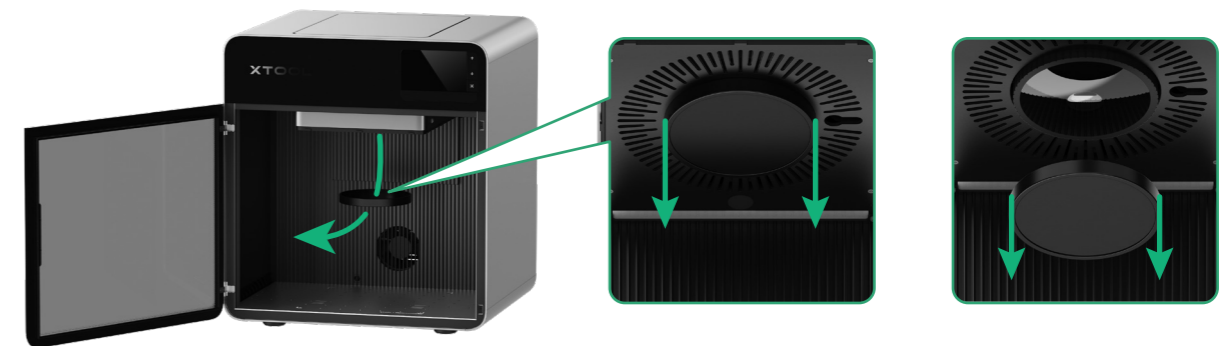
Input power	100 – 240 V ~ 50 / 60 Hz, 130 W
Laser module	445 ± 15 nm blue-light laser 1064 ± 5 nm fiber infrared laser
Laser power	20 W (445 ± 15 nm) 20 W (1064 ± 5 nm)
Connection mode	Wi-Fi, USB, IP

## Get the machine ready

- 1 Ensure that xTool Retail Marker is turned off.



- 2 Pull down the field lens protector to remove it.



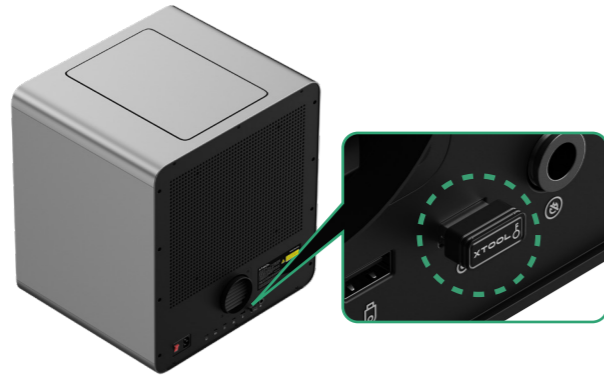
Ensure that the protector is removed every time before you use the machine. If you won't use the machine for a long period of time, you can install the protector back to prevent the field lens from getting dusty.

**3** Ensure the key is fully inserted.

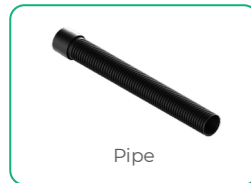


**Access-control key**

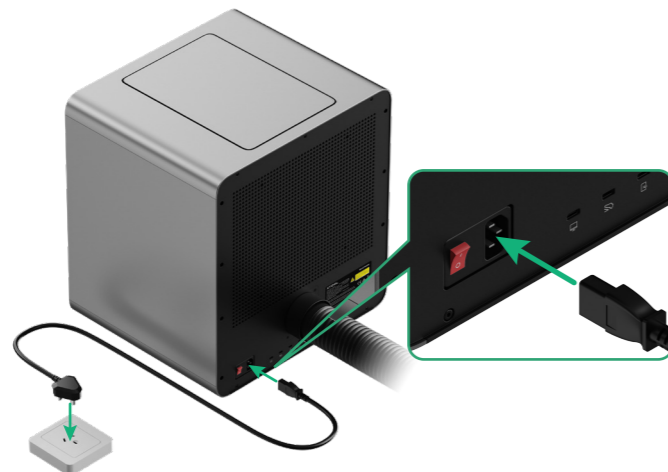
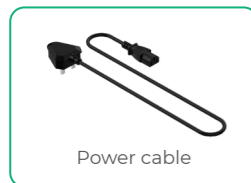
Removing the key can disable the machine's processing and related functions.



**4** Install the pipe.



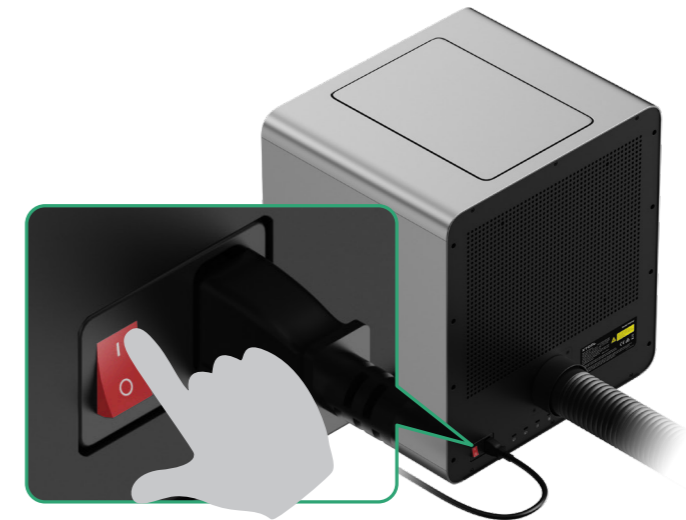
**5** Connect to a power supply.



**Use xTool Retail Marker**

**1** Power on

Turn on the power switch to power on xTool Retail Marker.



**2** Operate xTool Retail Marker with Customthings



Customthings is a customized software. Scan either QR code below to contact our sales for inquiries or customization services.



[customthings.com](https://customthings.com)



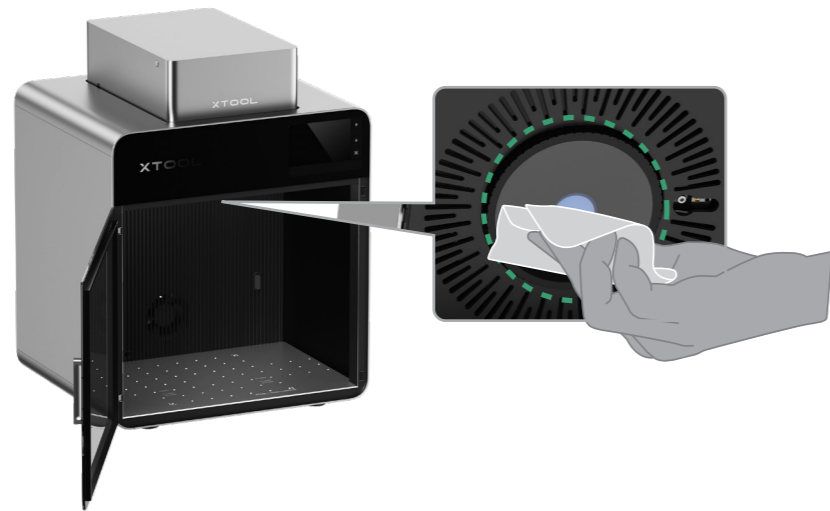
[xtool.com/pages/xtool-retail-solution](https://xtool.com/pages/xtool-retail-solution)

## Maintenance

⚠ Disconnect power before maintaining the product.

### Clean the field lens

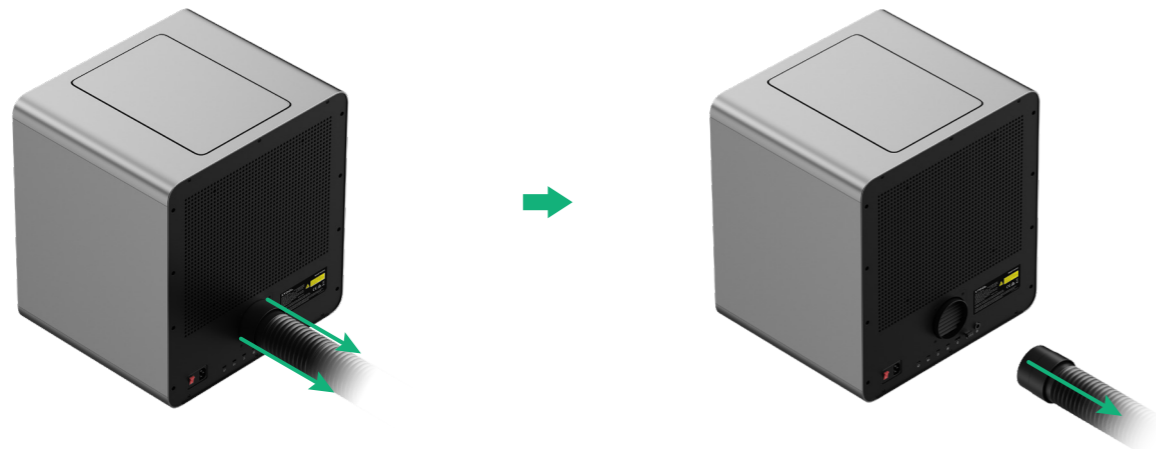
When laser power attenuation occurs, for example, engraved patterns are shallow or materials can't be cut as expected, the field lens may get dirty. Clean it with the lint-free cloth moistened with alcohol.



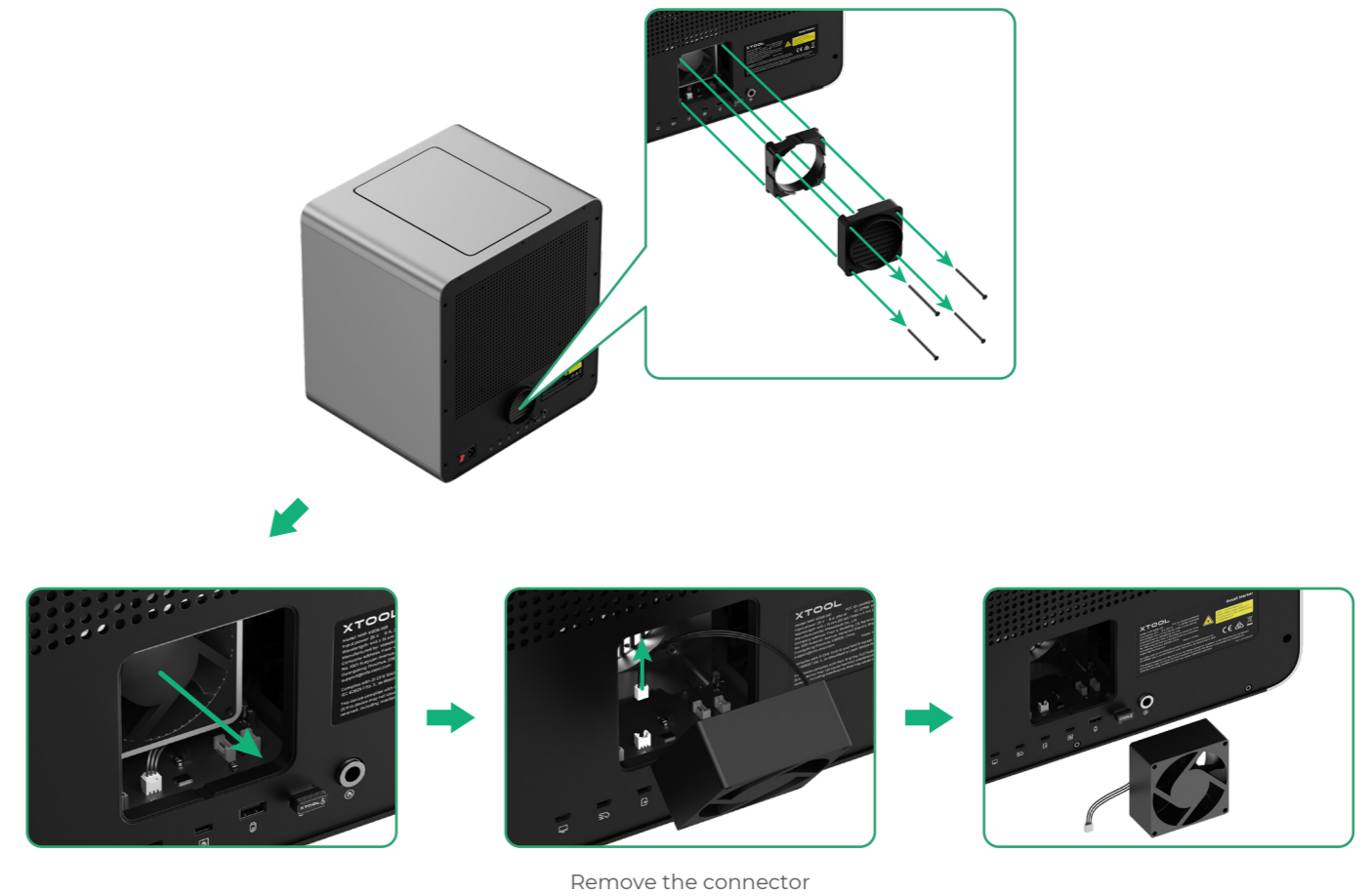
### Clean the fan module

When smoke runs out of the protective door, the fan module may be blocked by dust. Clean it to ensure proper smoke exhausting.

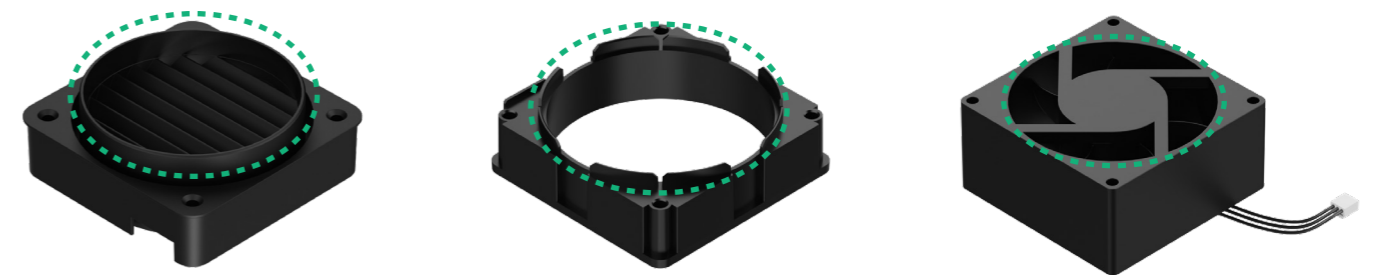
(1) Remove the pipe.



(2) Detach the cover, and then take out the fan module.



(3) Use a brush or other tools to clean both sides of the fan module.



⚠ Do not rinse or immerse the fan module in water, as it may damage the circuit.

( 4 ) Install the fan module back to the main unit.



Plug in the connector

